

2400

6204

4270

2450

TOTAL MASS = 38800 KG

Parts List		
ITEM	QTY	DESCRIPTION
1	1	Lower Guide Frame
2	2	CW Standard
3	2	Base Section
4	1	Upper Tower
5	1	Weight Pack
6	1	Sq Kelly

AVOPILING P/L.
 Foundation Piling Drilling Contractors
 Manufacturing
 205-207 Berkeley Rd
 Unanderra N.S.W.
 2526
 Main Office
 72-74 Gibbes St
 Chatswood N.S.W.
 2087

Designed by: T. Shackleton	Drawn by: T. Shackleton	Checked by: R. Weitbrecht	Approved by - date	Date: 5-02-08	Drawing No: APDT-001
Project No:	Contract No:	Scale: 0.04 : 1	Edition: 2	Sheet 1/2	Part No:
Project: Dynamic Test Rig.				Description: General Arrangement.	

THIRD ANGLE PROJECTION
 This drawing remains the property of Avopiling P/L, and should not be copied or reproduced without the written permission of the owner.

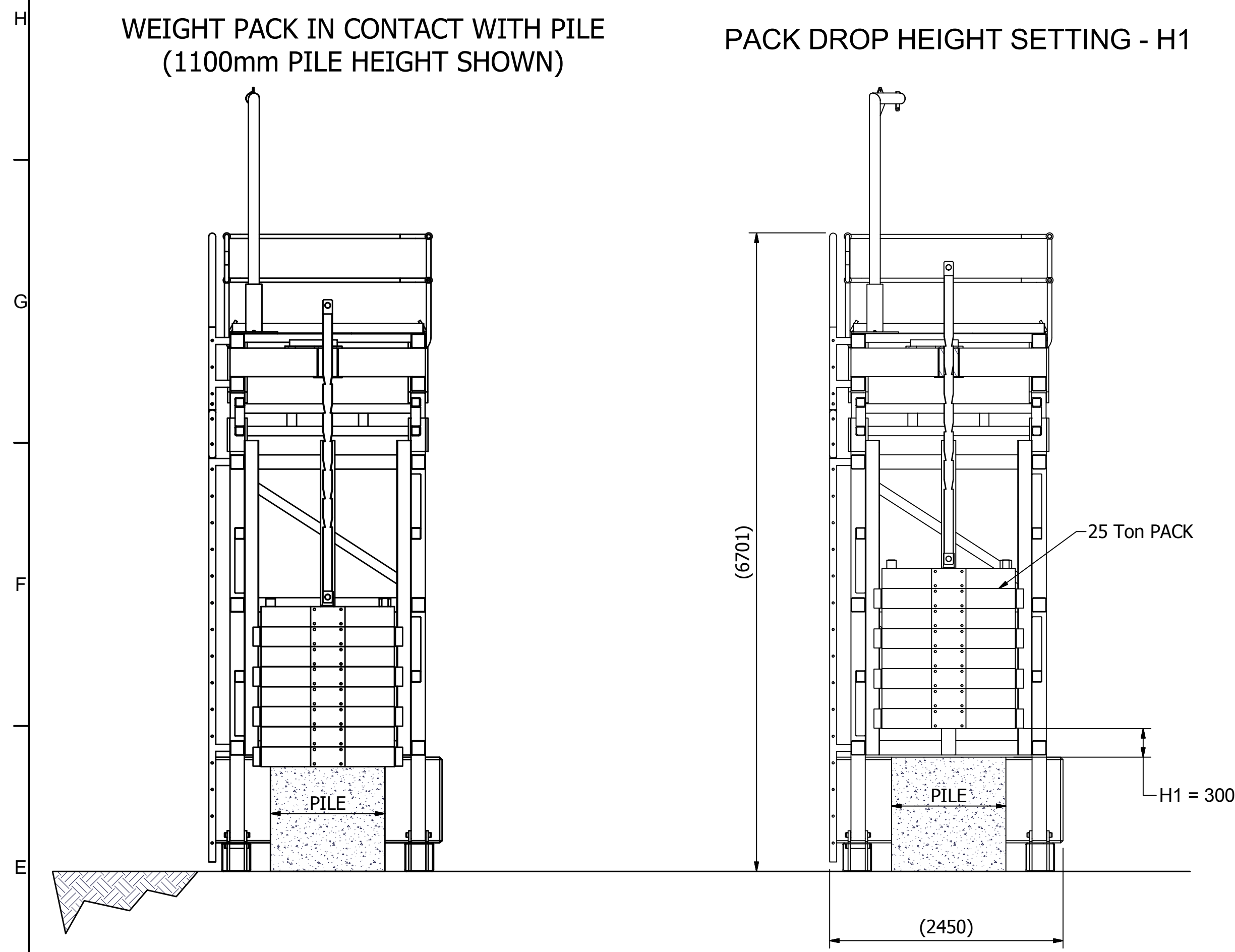
NOTE: DRAWING IS INDICATIVE ONLY
 PLEASE CONTACT **AVOPILING PTY LTD** FOR MORE INFORMATION

12 11 10 9 8 7 6 5 4 3 2 1

WEIGHT PACK IN CONTACT WITH PILE
(1100mm PILE HEIGHT SHOWN)

PACK DROP HEIGHT SETTING - H1

DYNAMIC TEST RIG - WEIGHT PACK DROP HEIGHT SETTINGS	
SETTING	DISTANCE FROM TOP OF THE PILE (mm)
H1	300
H2	600
H3	900
H4	1200
H5	1500
H6	1800



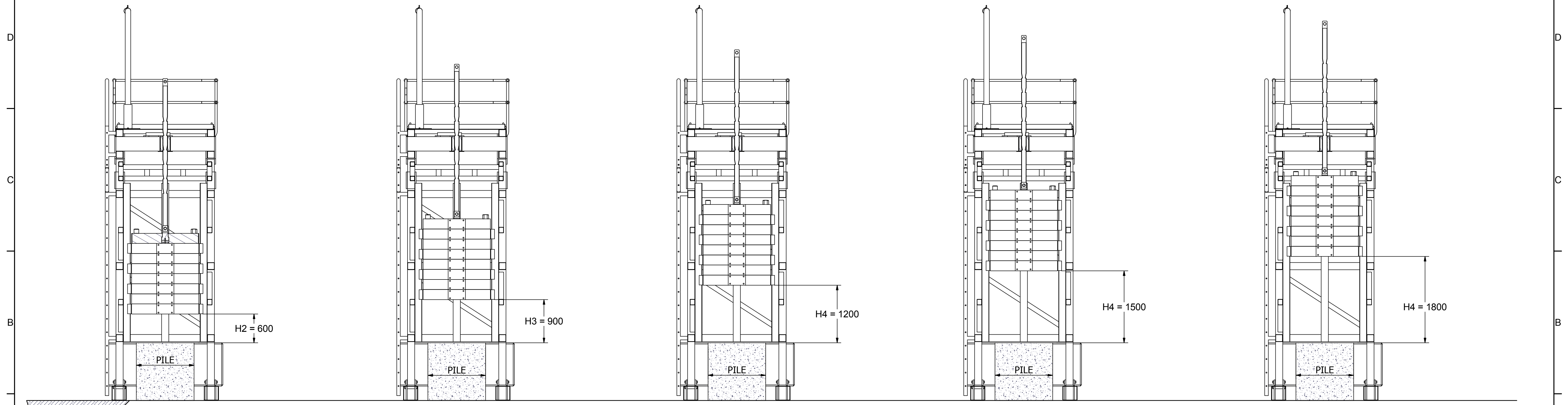
PACK DROP HEIGHT SETTING - H2

PACK DROP HEIGHT SETTING - H3

PACK DROP HEIGHT SETTING - H4

PACK DROP HEIGHT SETTING - H5

PACK DROP HEIGHT SETTING - H6



NOTE: DRAWING IS INDICATIVE ONLY
PLEASE CONTACT **AVOPILING PTY LTD** FOR MORE INFORMATION

AVOPILING P/L. Foundation Piling Drilling Contractors Manufacturing 205-207 Berkeley Rd Unanderra N.S.W. 2526	Designed by: T. Shackleton	Drawn by: T. Shackleton	Checked by: R. Weiltrecht	Approved by - date	Date: 5-02-08	Drawing No: APDT-001	THIRD ANGLE PROJECTION
	Project No:	Contract No:	Scale: 0.04 : 1	Edition: 2	Sheet 2/2	Part No:	This drawing remains the property of Avopiling P/L and should not be copied or reproduced without the written permission of the owner.
Project: Dynamic Test Rig.						Description: General Arrangement.	

12 11 10 9 8 7 6 5 4 3 2 1